



Distington

“Comprehensive Wastewater Solutions for Every Industry”

ETP * STP * RO * UF * MEE * ZLD * ATFD

**End to End Solution For Effluent Water
Recycling and Zero Liquid Discharge Systems**



OUR CORE SOLUTIONS

- * Zero Liquid Discharge (ZLD) – MEE & ATFD
- * Effluent Treatment Plants (ETP)
- * Reverse Osmosis (RO) & Ultra Filtration (UF) Systems
- * Sewage Treatment Plants (STP)
- * Water Softening Systems
- * Water Recovery Systems (WRS)
- * Acid Oil Plants

Email: marketing@distingtonindia.com

Phone: +91-7387888545

DISTINGTON ENGINEERS & CONSULTANTS PVT. LTD.

Engineering Sustainable Water Solutions

About Us:

For over 30 years, Distington Engineers & Consultants Pvt. Ltd. has helped industries turn water challenges into reliable, cost-effective solutions.

We design, build, and maintain everything from Effluent and Sewage Treatment Plants to Zero Liquid Discharge systems (MEE & ATFD), RO-UF plants, and Water Recovery solutions—all tailored to your needs.

With end-to-end in-house capabilities for design, manufacturing, testing, and commissioning, we ensure your systems run efficiently, stay compliant, and reduce operating costs—so you can focus on your core business.



Why Choose Distington?

- 30+ years of expertise
- 1000+ successful installations
- Multi-industry experience
- In-house design, manufacturing & testing
- Commitment to sustainability & compliance
- 24/7 service & technical support



30+

Years of experience



20,000 KLD

water recycley per day



1,000+

Installation



150+

Experienced Manpower

Our Presence

- 1000+ installations
- Domestic: All major states in India
- International: Australia, Malawi, Uganda, Nigeria, Qatar, Chad and expanding
- Clients: PSU, Fortune 500 companies, multinational corporations, SMEs

OUR CORE SOLUTIONS

Zero Liquid Discharge (ZLD) – MEE & ATFD

Our ZLD systems are engineered to achieve maximum water recovery with **minimal to zero discharge**.

Multi Effect Evaporator (MEE):

- Multiple evaporation stages for energy efficiency
- Handles high TDS & complex effluents

Agitated Thin Film Dryer (ATFD):

- Recovers salts and solids from concentrated slurry
- Ensures compliance with stringent environmental norms

Benefits:

- High water recovery rates
- Reduced environmental footprint
- Robust, long-term performance

Our Clients :



160 KLD Oil Refinery ZLD (MEE + ATFD)

Effluent Treatment Plants (ETP)

Our ETPs are tailor-made for your specific industrial needs removing contaminants such as chemicals, heavy metals and organic matter.

Applications:

- * Chemical & Pharma
- * Food & Beverages
- * Textile & Dyeing
- * Automobile
- * Dairy
- * Steel & Metal
- * Pulp & Paper

Flow Range: 1 KLD to 1500 KLD

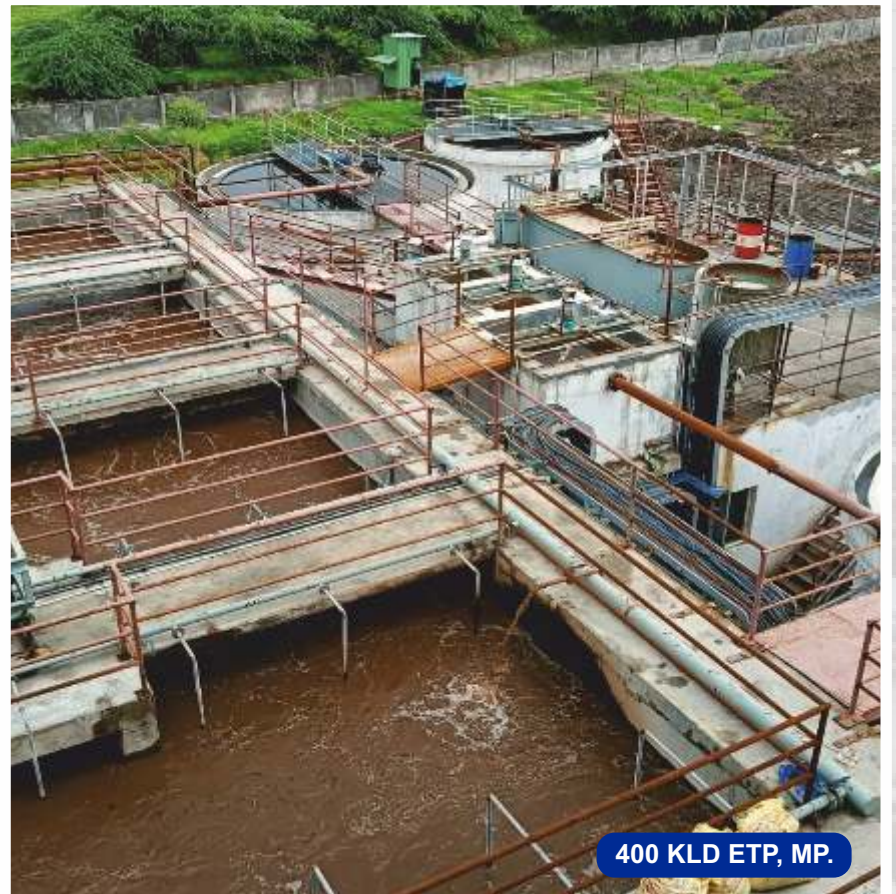
Technology Options:

- SBR (Sequencing Batch Reactor)
- MBBR (Moving Bed Biofilm Reactor)
- EA (Extended Aeration)
- MBR (Membrane Bioreactor)
- Three phase reactor

Key Features:

- CPCB-approved technology
- Low O&M cost and easy upgradability
- Compact design with minimal footprint
- 24/7 service support
- High treatment efficiency for reuse or safe discharge

Our Clients :



400 KLD ETP, MP.

Reverse Osmosis (RO) & Ultra Filtration (UF) Systems

RO Plants: Remove dissolved salts, ions, and impurities for high-purity water.

UF Systems: Eliminate bacteria, viruses, and suspended solids; ideal as RO pre-treatment.

Flow Range: 250 LPH to 100 m³/hr

Applications:

- * Drinking Water
- * Pharma
- * Hotels & Resorts
- * Aquaculture
- * Industrial Process Water

Key Benefits:

- Energy-efficient design
- Long membrane life with advanced protection
- Fully automated or manual options

Our Clients :



UF-RO System- 200 KLD

Sewage Treatment Plants (STP)

Designed for residential, commercial, hospitality, institutional, and municipal applications, our STPs combine biological, physical, and chemical processes to deliver high-quality treated water.

Flow Range: 1 KLD to 5 MLD

Material Options: FRP, SS, MSRL, MSEP, Civil Construction

Operation: Semi-automatic / Fully Automatic

Key Benefits:

- * Compact design & user-friendly operation
- * Weather-proof, corrosion-resistant structures
- * Low maintenance with high durability
- * Fully automated control systems
- * Complimentary AMC for the first year

Our Clients :



Prefabricated STP 35 KLD, Pithampur

OTHER TURNKEY OFFERINGS



Water Softening Systems



Water Recovery Systems (WRS)



Acid Oil Plants

Our Services

- * **Operation & Maintenance** – Lifecycle-focused plant performance
- * **Jet Cleaning & CIP** – High-pressure cleaning for MEE & ZLD systems
- * **Audit & Consultation** – Technical evaluations for system optimization
- * **Process Chemicals & Bioculture Supply** – High-quality consumables
- * **Spare Parts & Repairs** – Reliable replacement & quick turnaround



Water Treatment Allied Equipment & Components

Aeration Solutions – Surface Aerators, Diffused Aeration Systems, Jet Aerators

Sludge Handling – Filter Press, Decanter Centrifuge, Sludge Drying Beds

Oil Removal – Oil Skimmers, Dissolved Air Flotation Systems

Filtration Units – Pressure Sand Filters, Activated Carbon Filters

Mixing & Agitation – Flash Mixers, Flocculators, Agitators

Chemical Dosing Systems – Skid-mounted dosing units

Mechanical Equipment – Tube Settler Media, MBBR Media, Diffusers, Pumps, Panel Systems

Dryers- Paddle Dryer (for sludge drying) and Agitated Thin Film Dryer (ATFD)



Floating Aerator



Oil Scparator



Carbon & Sand Filter



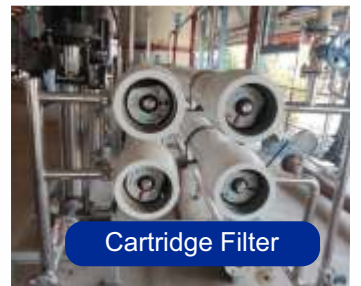
DAF



Flocculator



Lamella settling



Cartridge Filter



Belt Type Oil skimmer



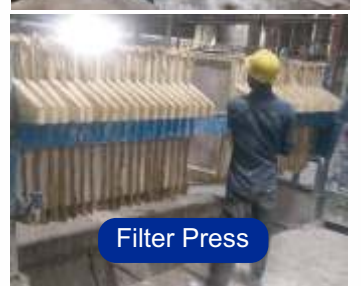
Diffused Aeration



Dosing Systems



Agitated Thin Film Dryer



Filter Press

Our Esteemed Clients

adani
wilmar

Government Opium
& Alkaloid Factories



MedImpact

ESTD : 1938
LOHIA
GROUP

PATANJALI



Srinivas Papers
Good Office is Power



TUFROPES



AWL
Agri business



EFFOTEL
by SSGM
INDORE

AAK

Bombay Hospital Indore

Cipla
Caring For Life



Princess
ROYAL PALACE HOTEL



OUR RECENT MEE-ZLD INSTALLATIONS



30 KLD-Pithampur



130 KLD -Bharuch



20 KLD-Ahemdabad



77 KLD-Gunnanapudi



160 KLD - Badnawar



100 KLD-Mysore



120 KLD-Nellore



120 KLD- Kota



Distington

"Comprehensive Wastewater Solutions for Every Industry"

ETP * STP * RO * UF * MEE * ZLD * ATFD

Head Office:

192/195, Sector E, Sanwer Road Industrial Area,
Indore, Madhya Pradesh – 452003, India

Email: marketing@distingtonindia.com | director@distingtonindia.com

Phone: +91-7387888545 | +91-9425046809

Website: www.distingtonindia.com



MINISTRY OF
CORPORATE
AFFAIRS
GOVERNMENT OF INDIA



GeM
Government
e Marketplace

